

ITAF



Managed WiFi





Managed WiFi

- Professional managed WiFi solution
- Offers:
 - Highly secure zero-trust WiFi for staff
 - Secure internet-only access for guests
 - Secure internet-only access for mobile devices
- Cloud WiFi Controller managed
- WiFi 6 (802.ax) and WiFi 5 (802.ac) access points

Cisco WiFi technology

- Cisco Wireless controller as the intelligent brain
- Central configuration, pushed to all Access Points, to ensure configuration consistency
- Real-time Access Point wireless frequency management, responding to changes in the RF spectrum
- Rogue access point detection



Cisco WiFi access point & antennas

- Range of antennas for various deployments
 - Indoor / outdoor
 - Omnidirectional / directional
 - Harsh environments (e.g. warehouses, freezers, ...)
 - Dual-band: 2,4Ghz and 5Ghz
- Standard office antenna
 - WiFi 6: 9105AX
 - WiFi 5: 1832i



Corporate WiFi



- Zero-trust security principle
- Every user authenticates with personal credentials (802.1x WPA2/3-Enterprise)
- Integrates with Active Directory for authentication
- Optional 2FA with personal PKI certificates

Guest internet access WiFi



- Secure internet access for guests
- Multiple authentication options:
 - Captive portal with vouchers
 - Captive portal with static password
 - Pre-Shared Key (PSK)
 - Advanced Captive Portal authentication options: social media, e-mail (PIN), SMS
- Guests isolated from the corporate network & from each other:
 - Secure CAPWAP tunnel from Access Point to Cloud WiFi Controller/Cloud Firewall
 - Peer-to-peer blocking for guest isolation

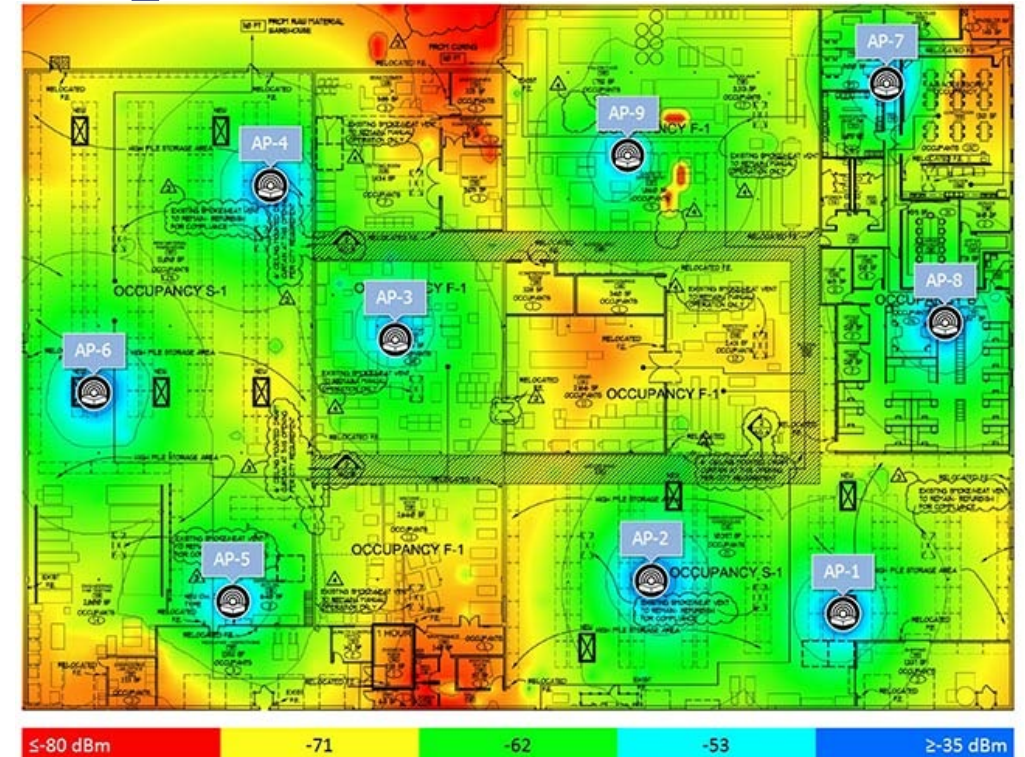
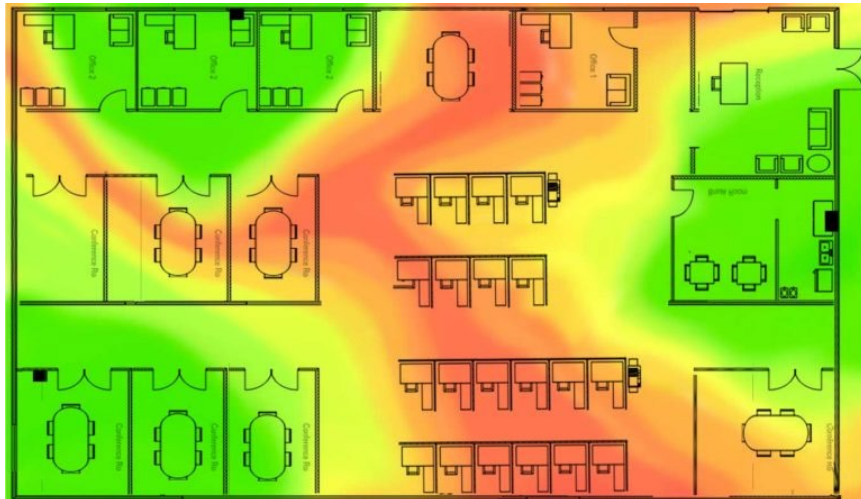


Mobile devices internet access

- Secure internet access for mobile devices of staff
- Pre-Shared Key (PSK) authentication
- Mobile devices isolated from the corporate network & from each other

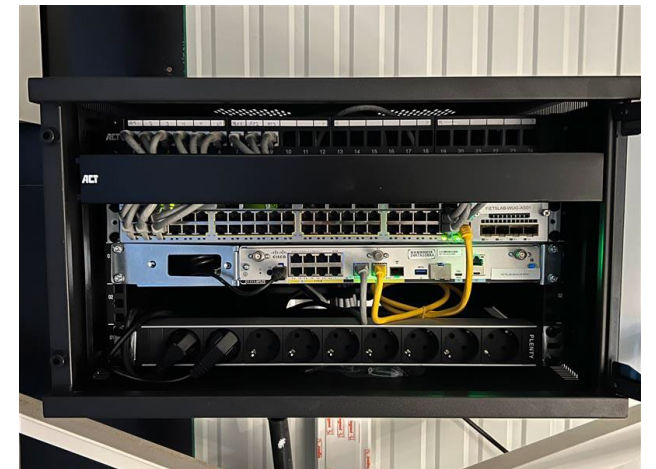
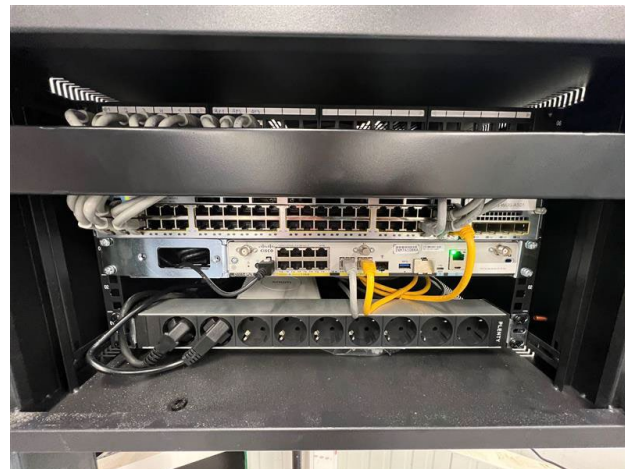
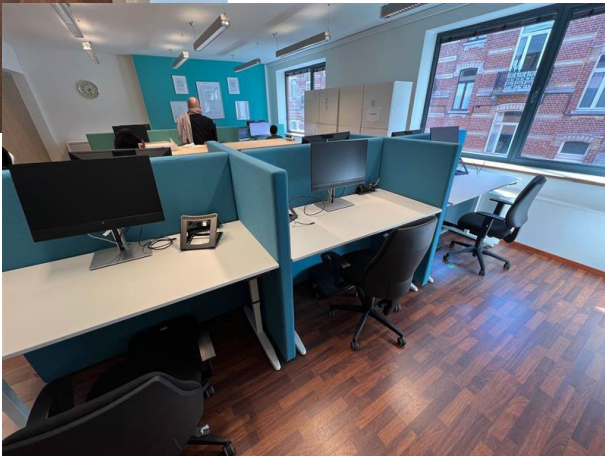
WiFi site surveys

- Professional surveying of WiFi coverage
- Either pre-deployment as part of WiFi design
- Or post-deployment to verify quality of deployment



Field Services

- Professional field installation services
- Cabling & Access Point installation
- Fiber splicing & cabling





IT Managed Services

- 24/7 monitoring for event management
- Performance & capacity graphs for trend analysis and anomaly detection
- Automated configuration revision management
- Expert-level support from ITAF network engineers

**THANK
YOU**

www.ITAF.eu



+32 9 277 90 00